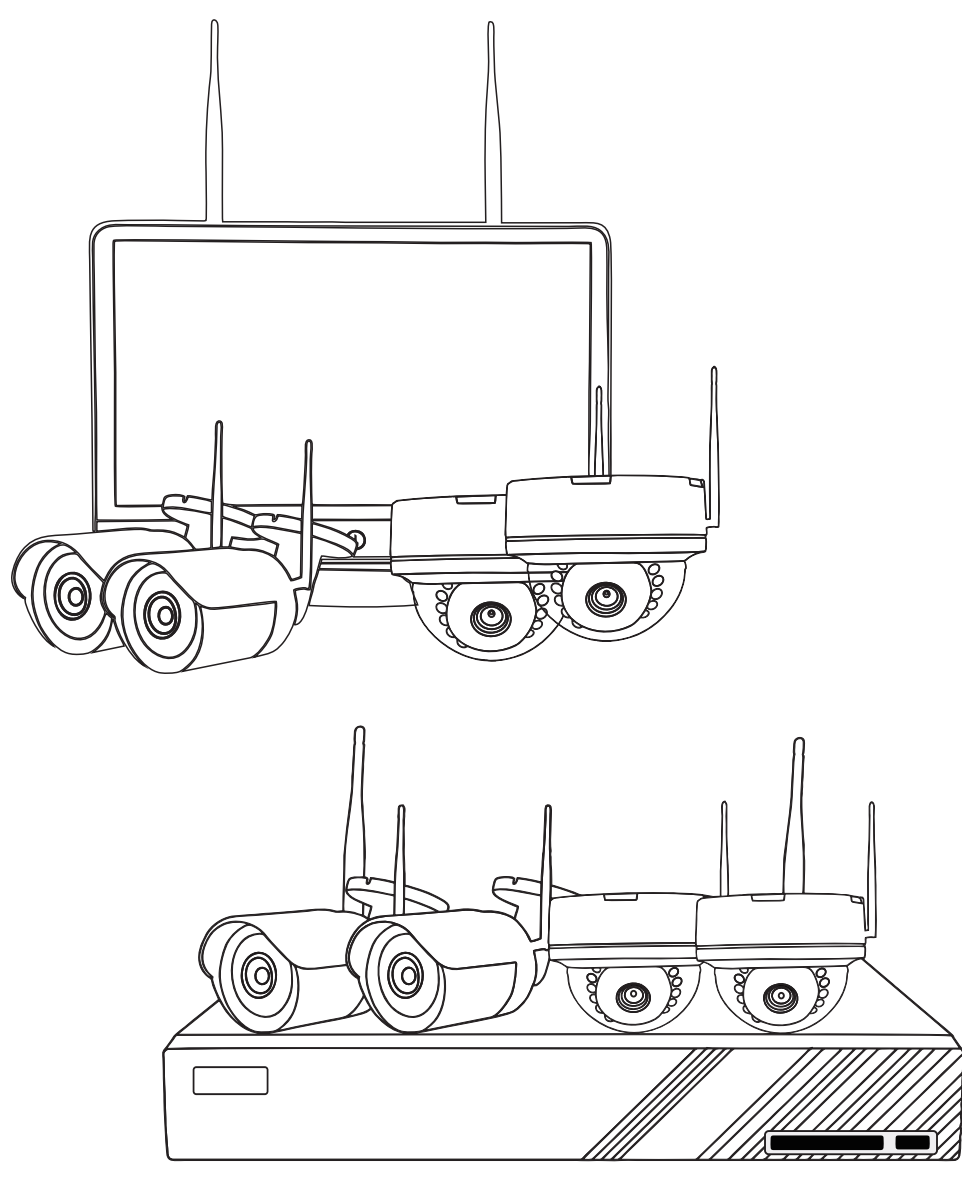


# Wireless Video Surveillance System

## User Guide



## Content

Attention.....	1
Safety Caution.....	1
Applications.....	1
Packing list.....	1
Hard drive installation.....	2
Connect the security system.....	3
Preparation:.....	3
Install cameras on the wall.....	4
Local init setup via following the Setup Wizard.....	4
System login.....	4
Download the App.....	5
General Setup.....	5
Fast Network.....	6
Mobile APP Access.....	6
HDD Setup.....	8
Setup password for the NVR security system.....	8
Adjust to HD 1080P output if you have a 1080P above HD monitor/HDTV connected.....	9
Motion alarm and mobile phone alert.....	9
Video playback and backup on local monitor.....	10
Remote access to your security system via WEB browser.....	10

### Attention

1. Do not reset the NVR (Network Video Recorder) back to Factory Setting to avoid cameras going offline. Once you did, you will not be able to view cameras, and it will take some time to set everything back up for proper use.
2. To prevent your system from being hacked, please set up security password for the system.
3. Pre-test before installing: simply power on the kit and see if cameras and NVR work well. It is a must to have cameras show up on the monitor before installing them in their final locations.
4. Contents/Reference pictures in the manual might be different from the object due to hardware or software upgrading.

### Safety Caution

1. NVR be away from water or liquid container on it.
2. Utilize the product in cool places.
3. Use the specific power supplies in the package. (bigger for NVR, smaller for cameras)
4. NVR operating temperature: 14°F~131°F; camera working temperature: -4°F~140°F.
6. Please utilize the product under the law.

### Applications

1. The NVR needs a monitor with VGA port/HD output to work with it. (except for the model with built-in monitor)
2. The system cannot store video without a hard drive, only 3.5" SATA hard drive suit for the NVR. Please make sure the kit you purchased is HDD pre-installed or not.
3. Keep the NVR online by connecting it to the router would allow the user to have remote viewing via phone/tablet, etc.

### Packing list

4 channel WIFI NVR system	8 channel WIFI NVR system
4pcs 1080P HD IP wireless camera	8pcs 1080P HD IP wireless camera
1pcs 4ch NVR	1pcs 8ch NVR
1pcs 12V/2A power supply (for NVR)	1pcs 12V/2A power supply (for NVR)
4pcs 12V/1A power supply (for camera)	8pcs 12V/1A power supply (for camera)
1pcs short Cat5 network jumper cable	1pcs Cat5 network jumper cable
User Guide, Screws bag(for HDD), Mouse	User Guide, Screws bag(for HDD), Mouse

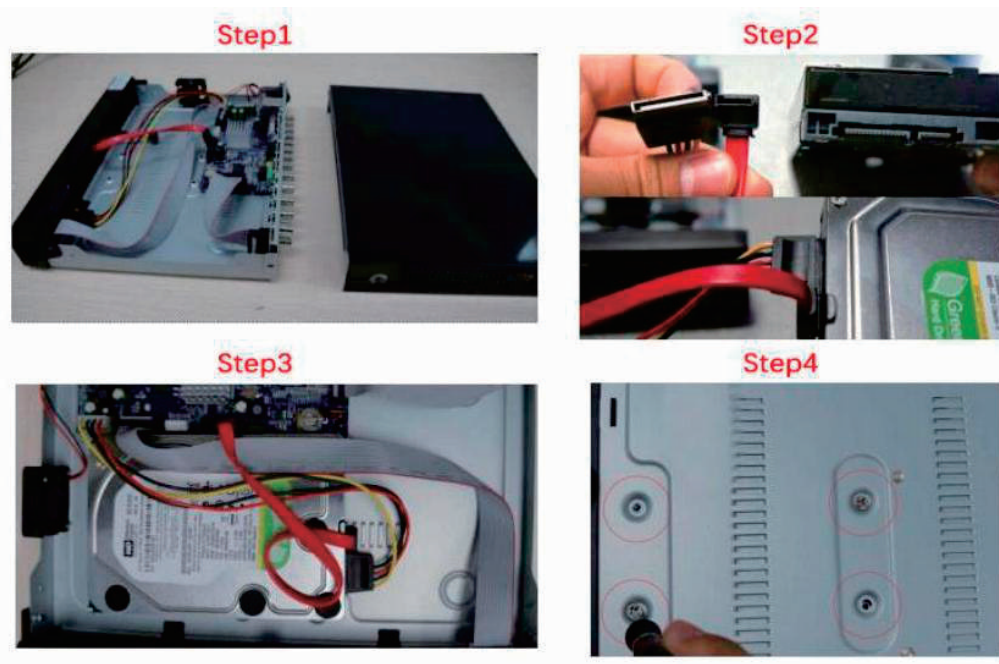
1

### Hard drive installation

Note: Please confirm the kit you purchased is HDD pre-installed, if not, there is no way to store video record. (Please see Applications on previous page)

Installing a hard drive (if your system has pre-installed a hard drive, please go to Step 6 directly)

1. Turn off the NVR, unscrew it and remove the cover.
2. Plug the SATA and data cables into the corresponding ports on HDD.
3. Place the HDD. (mind the cables and don't twine)
4. Hold the hard drive and turn the NVR over, position the screw holes on the HDD to the holes on NVR, screw and fix the HDD.
5. put back the cover and tighten the screws.

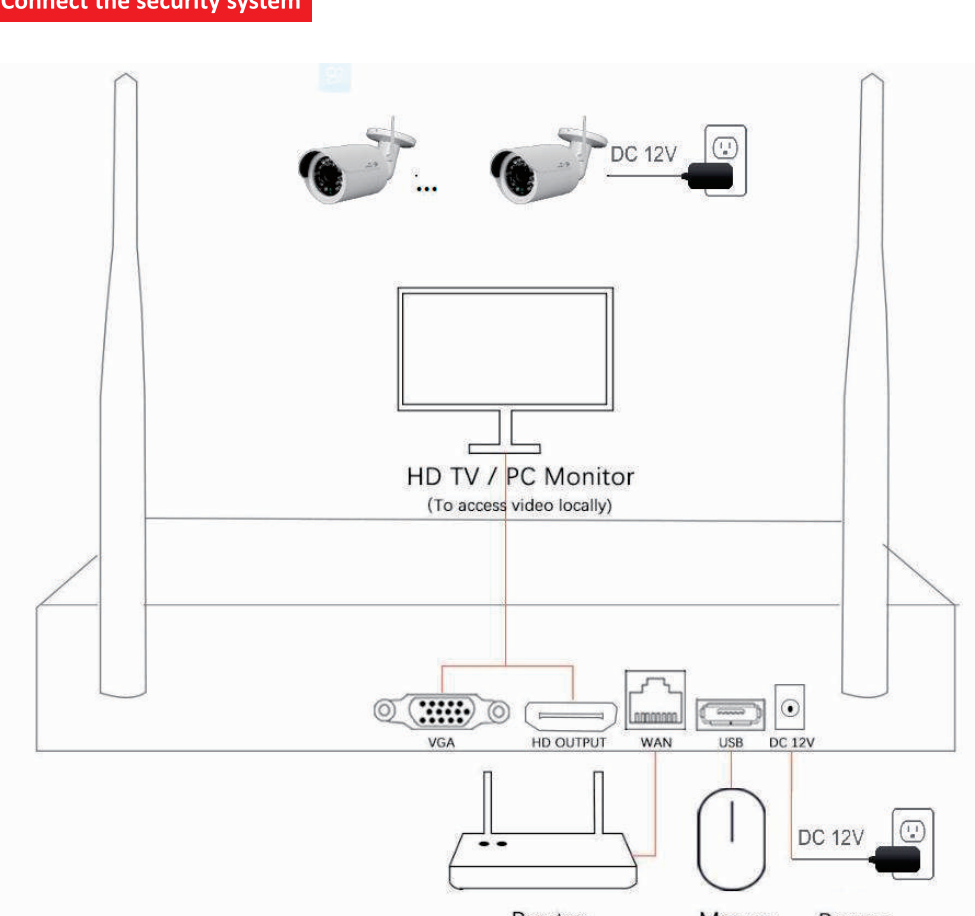


6. Right click the mouse to show task bar, and click home icon go to **【General setup】** -->

**【HDD setup】**, tick  in the box--> click **【Format】**

2

### Connect the security system

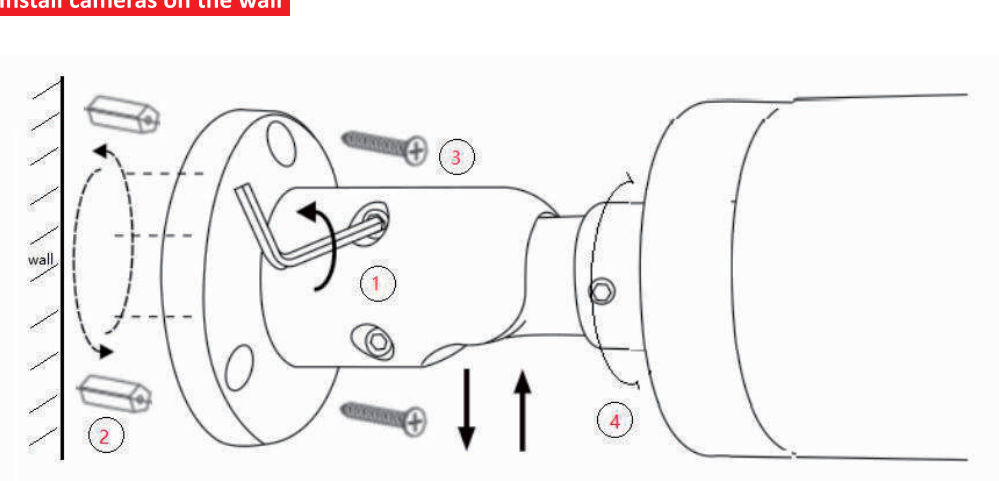


### Preparation

1. Screw the antennas on cameras and plug cameras into power source (12V 1A power adapter)
2. Screw the antennas on the NVR box and plug the NVR into power (12V 2A power adapter)
3. Connect the NVR to a standalone monitor via its HD output/VGA port, and power on them. (Monitor is not necessary for the system but built-in screen; laptop cannot be used as a monitor; cables for HD output and VGA port are not included in the kit)
4. Within minutes, you should see cameras video on screen.
5. Plug the mouse into USB port on the rear panel of NVR and start operating.

3

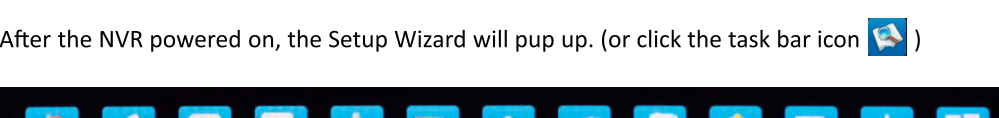
### Install cameras on the wall



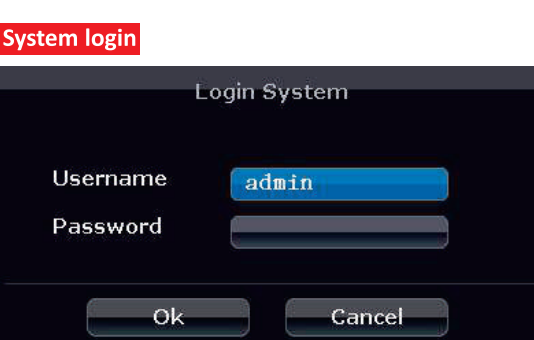
1. Loosen a bit the five hex head studs on the bracket via "L" Allen wrench, for easy installation.
2. For concrete wall: mark the install position holes on the wall, drill holes, knock in plastic plugs to the holes, screw the camera on the wall.
3. For wood wall: screw the camera on the wall directly with out the plastic plugs.
4. loosen hex head studs and adjust any angle you want, then tighten the studs.

### Local init setup via following the Setup Wizard

After the NVR powered on, the Setup Wizard will pop up. (or click the task bar icon )



### System login



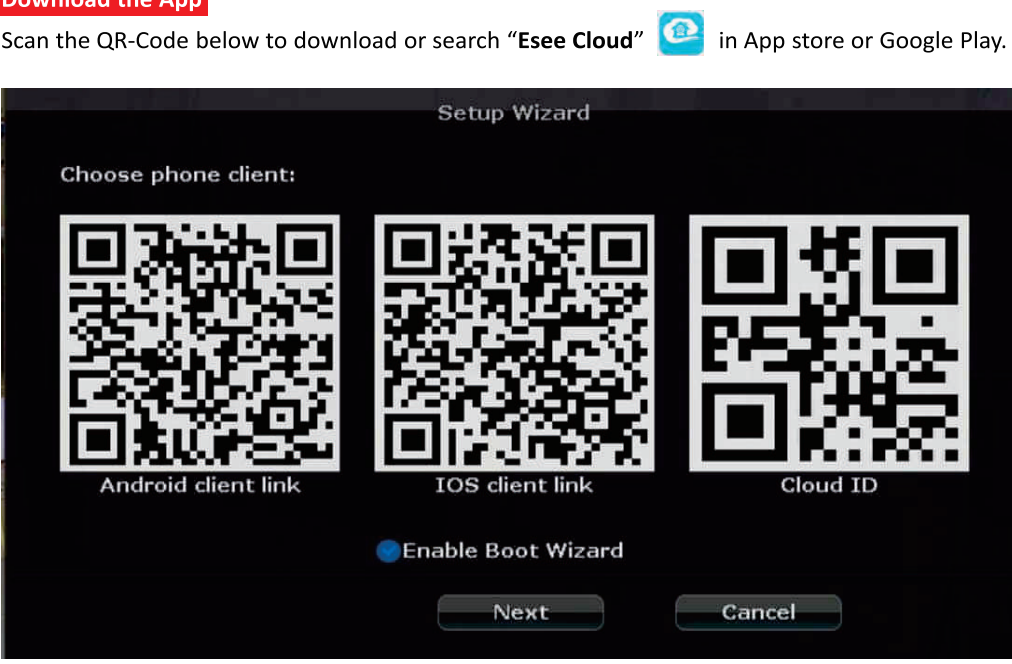
User Name: default "admin"

Password: default " " (leave it blank, do not input anything)

4

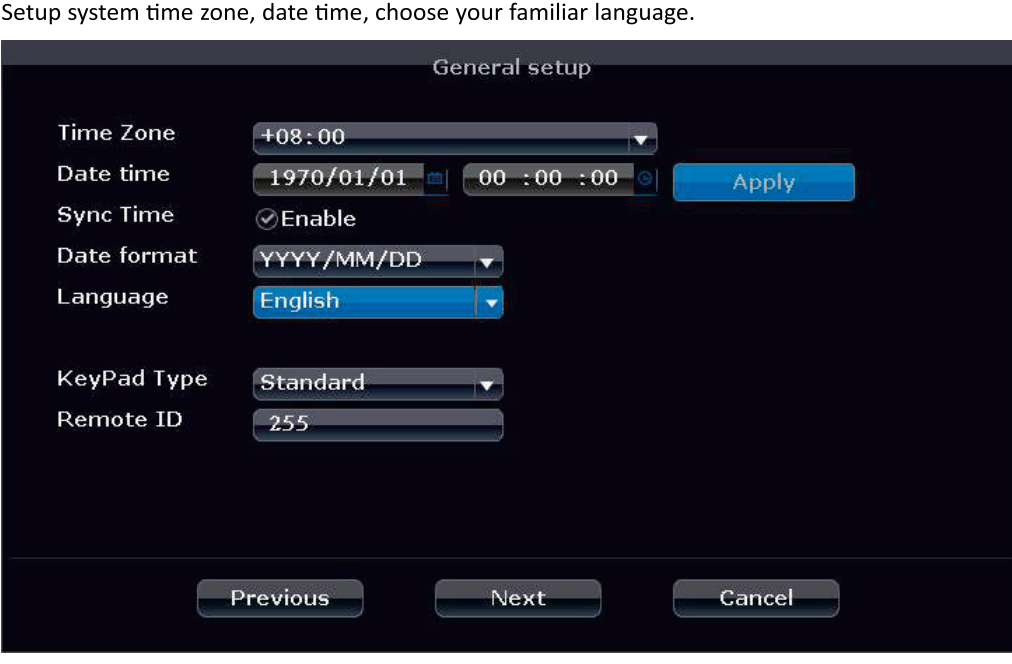
### Download the App

Scan the QR-Code below to download or search "Esee Cloud" in App store or Google Play.



### General Setup

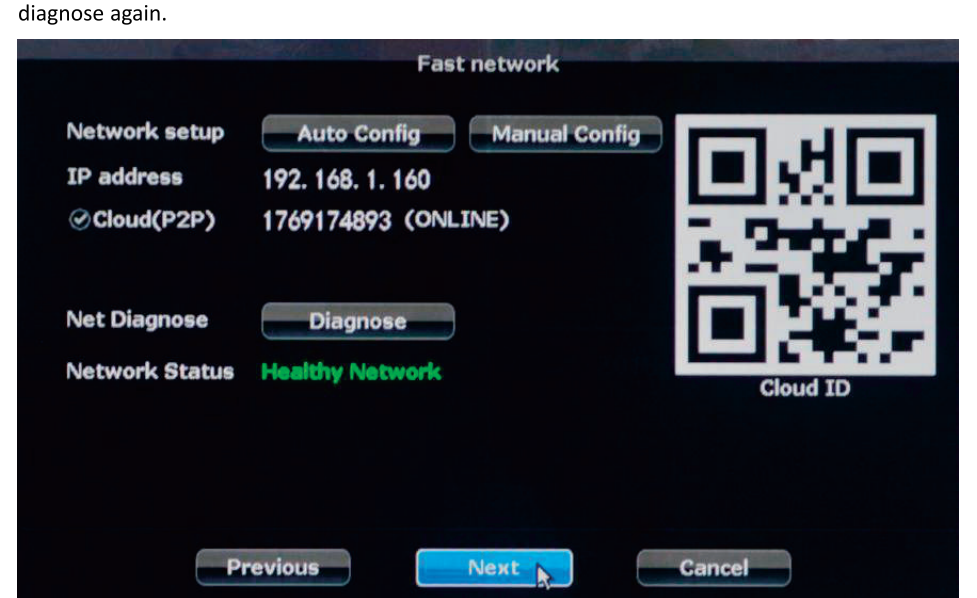
Setup system time zone, date time, choose your familiar language.



5

### Fast Network

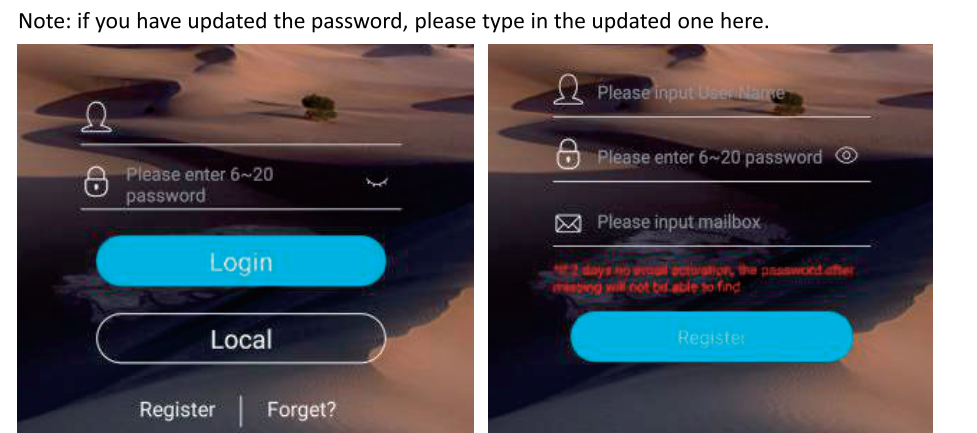
When getting into this page, the NVR will check the network and show status automatically. If something error detected, please check your network connection and click "Auto Config" diagnose again.



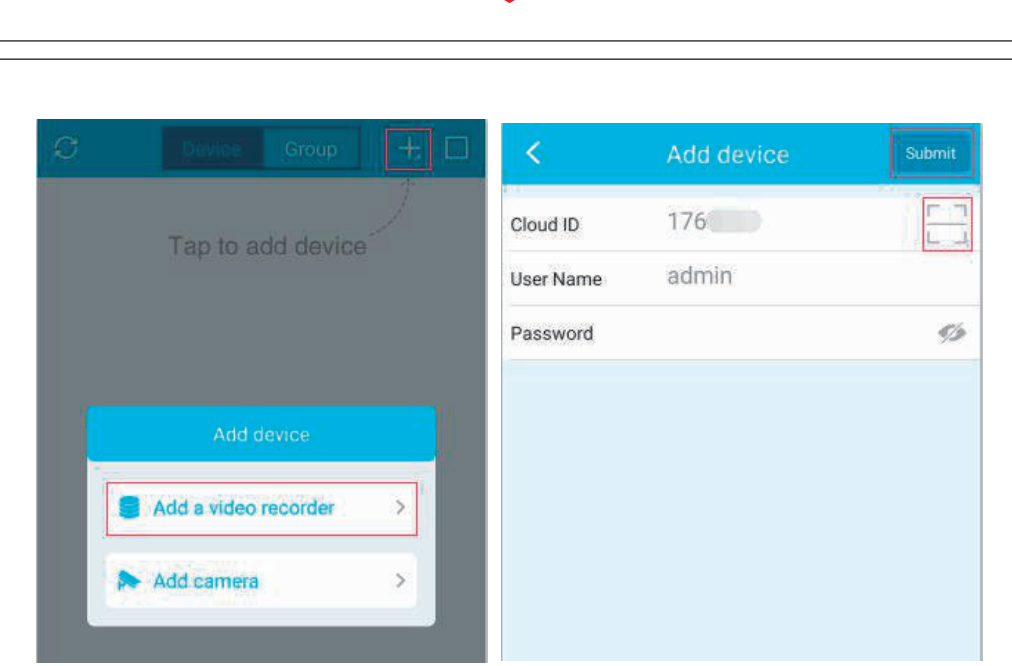
### Mobile APP Access

1. Tap the APP icon "Esee Cloud" to run the mobile APP.
2. Register a new account for the first time use. (you may tap "Local" to enter directly if you DON'T want to register).
3. login in and tap "+" add a video recorder.
4. Scan QR code of the Cloud ID and tap your NVR to add a new device. ( default no password).
5. Enter your password and tap "Submit" to save and start live. (leave it blank, do not input anything).

Note: if you have updated the password, please type in the updated one here.



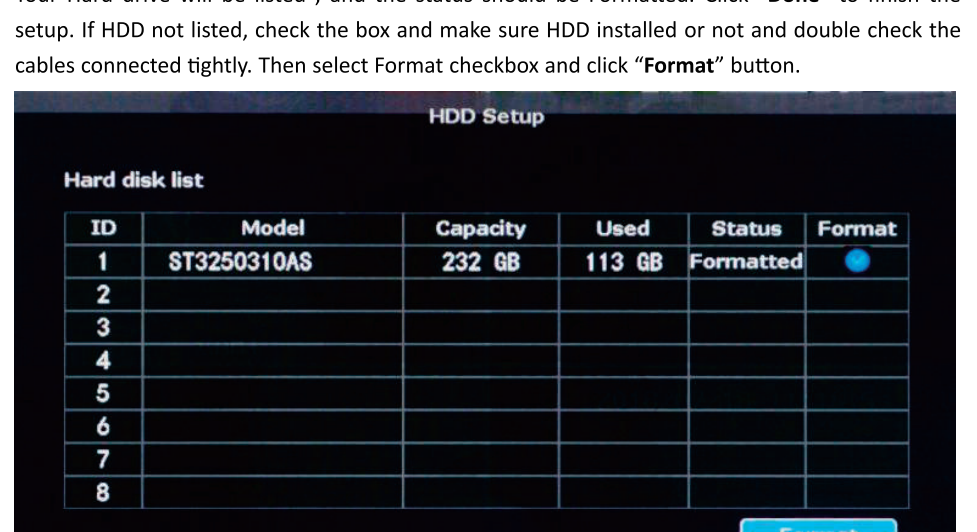
6



7

### HDD Setup

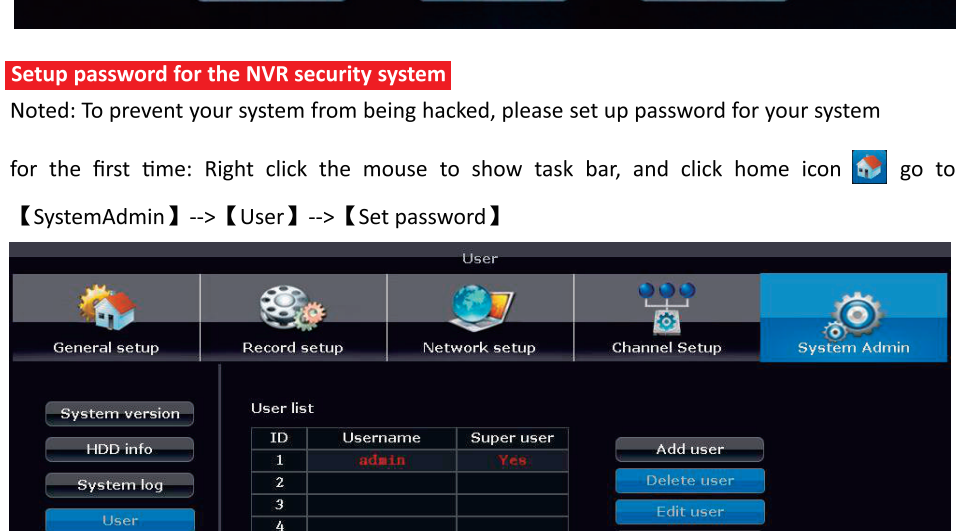
Your Hard drive will be listed, and the status should be Formatted. Click "Done" to finish the setup. If HDD not listed, check the box and make sure HDD installed or not and double check the cables connected tightly. Then select Format checkbox and click "Format" button.



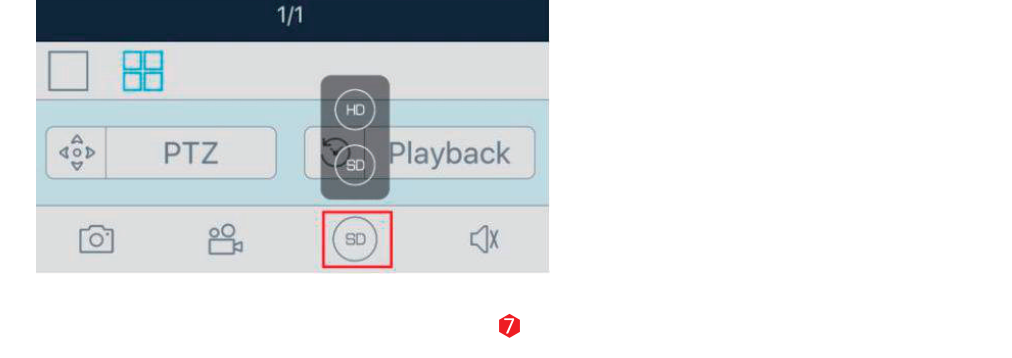
### Setup password for the NVR security system

Noted: To prevent your system from being hacked, please set up password for your system

for the first time: Right click the mouse to show task bar, and click home icon go to **【SystemAdmin】** --> **【User】** --> **【Set password】**



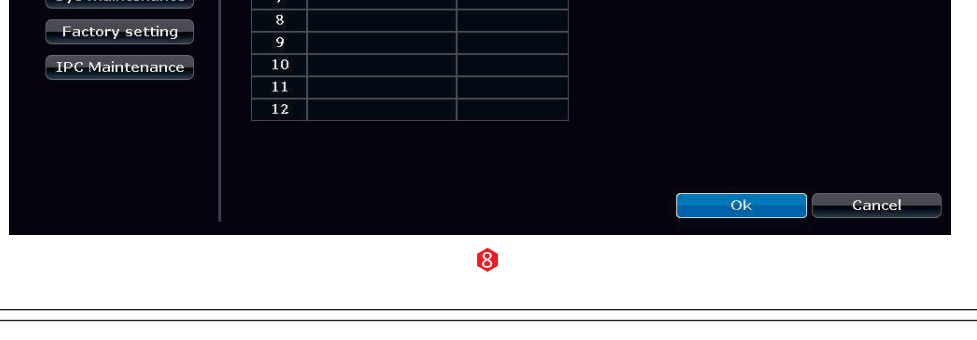
8



9

### Video playback and backup on local monitor

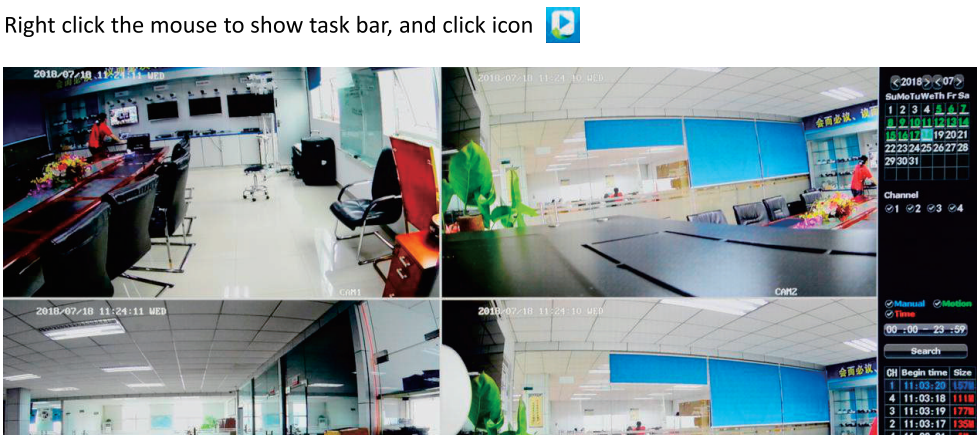
Right click the mouse to show task bar, and click icon



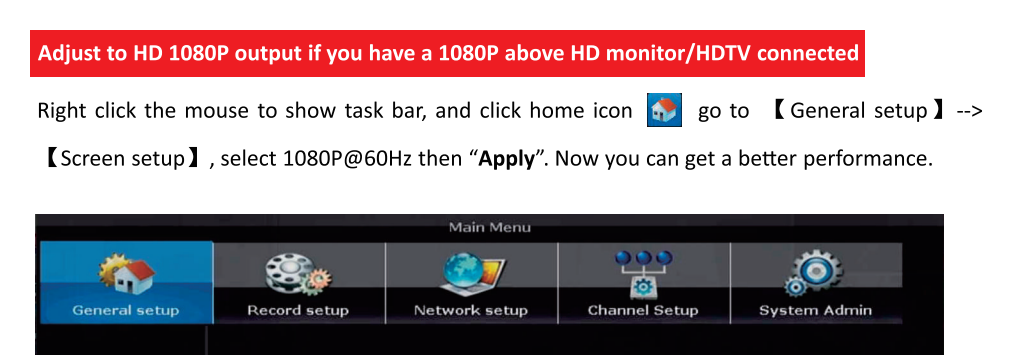
To backup video, plug in the USB flash drive to NVR and choose the files then click **Backup**.

### Remote access to your security system via WEB browser.

Please visit "http://www.e-seent.com" if you want PC web access.



10

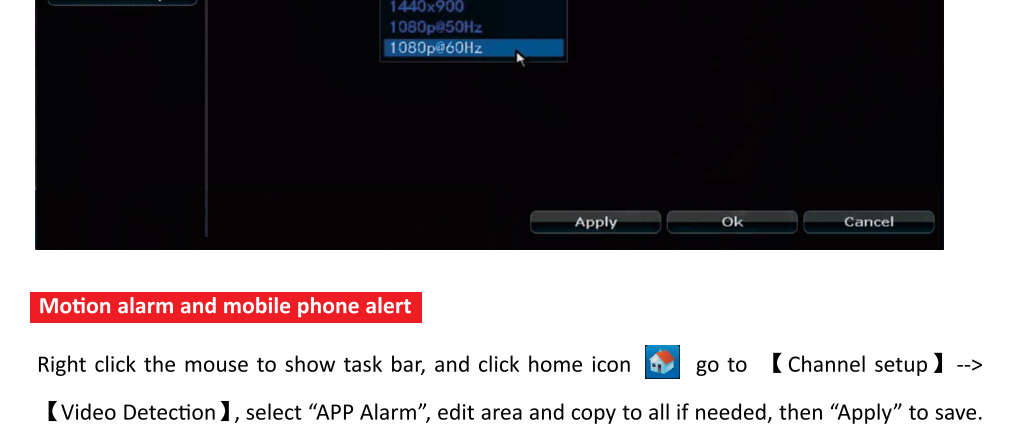


11

### Motion alarm and mobile phone alert

Right click the mouse to show task bar, and click home icon go to **【Channel setup】** -->

**【Video Detection】**, select 1080P@60Hz then "Apply". Now you can get a better performance.



12

